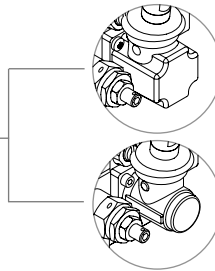
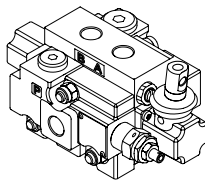


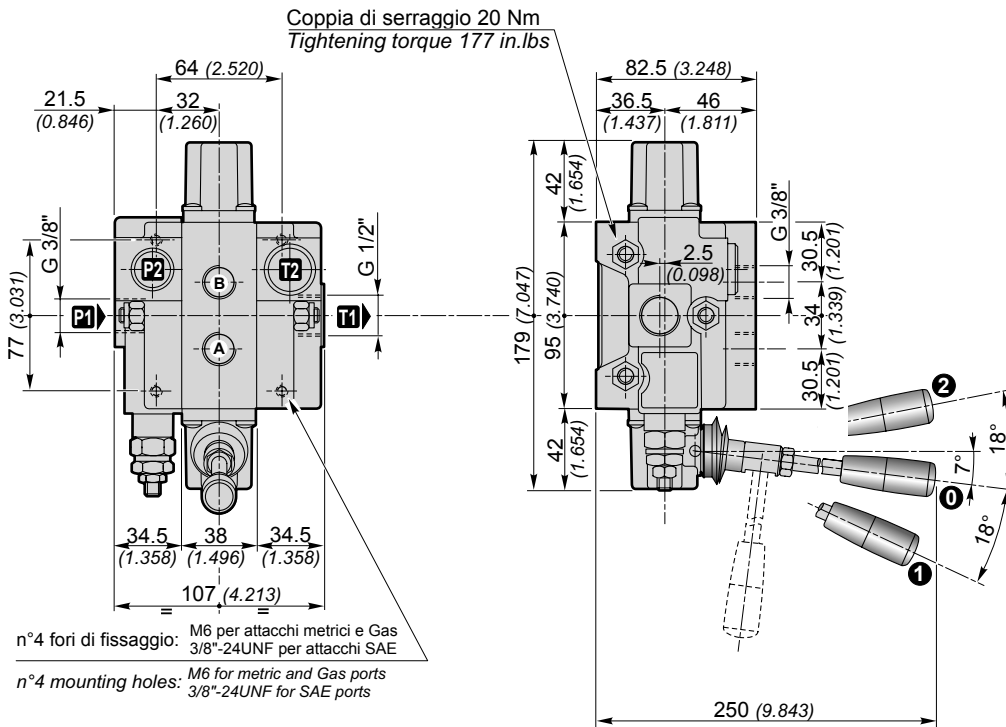
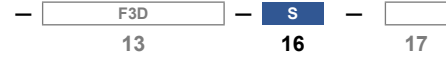
Q30

DISTRIBUTORI COMPONIBILI SECTIONAL DIRECTIONAL CONTROL VALVES



(Standard)
Comando e posizionario in plastica
Control and positioner plastic

S
Comando e posizionario in Alluminio
Control and positioner Aluminium



Filettature disponibili / Available ports

Bocche Ports	BSP (standard)	SAE
P1	G 3/8"	3/4" - 16UNF (SAE 8)
P2	G 3/8"	3/4" - 16UNF (SAE 8)
A-B	G 3/8"	9/16" - 18UNF (SAE 6)
T1	G 1/2"	7/8" - 14UNF (SAE 10)
T2	G 1/2"	3/4" - 16UNF (SAE 8)

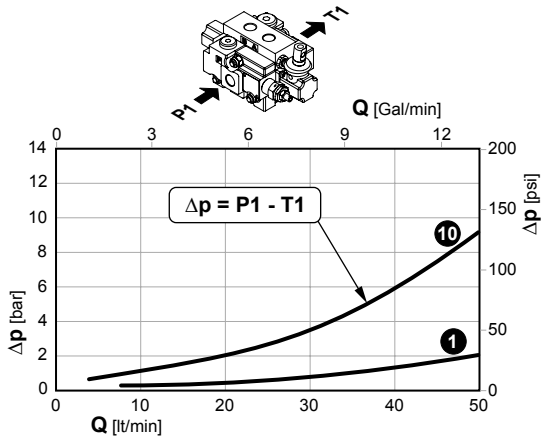
Tappo per carry-over (su uscita T1)
Carry-over plug (on T1 port)

T1	G 1/2"
X	G 3/8" - G 1/2"
T1	7/8"-14UNF (SAE 10)
X	3/4" - 16UNF (SAE 8)

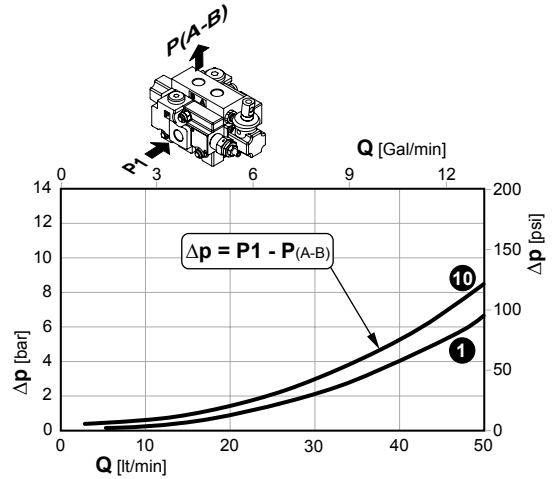
Q30

DISTRIBUTORI COMPONIBILI SECTIONAL DIRECTIONAL CONTROL VALVES

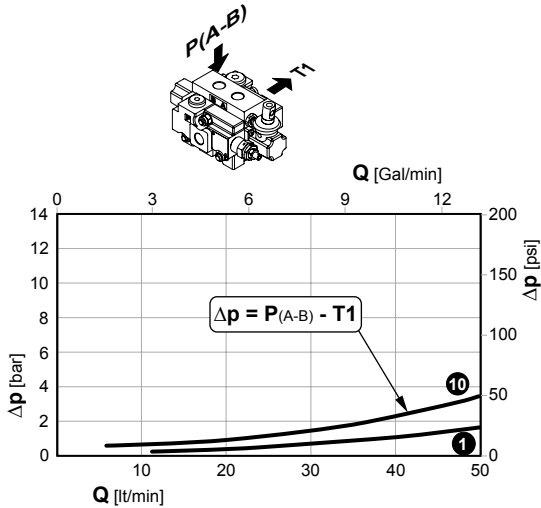
Perdite di carico con il cursore in posizione neutra
(Δp in funzione del numero di sezioni attraversate)
Pressure drop with spool in neutral position
(Δp depending on the number of the crossed sections)



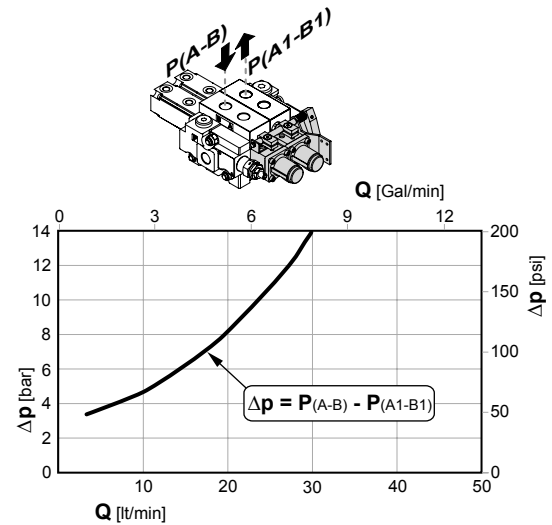
Perdite di carico con il cursore in posizione di lavoro
(Δp in funzione del numero di sezioni attraversate)
Pressure drop with spool in working position
(Δp depending on the number of the crossed sections)



Perdite di carico con il cursore in posizione di lavoro
(Δp in funzione del numero di sezioni attraversate)
Pressure drop with spool in working position
(Δp depending on the number of the crossed sections)

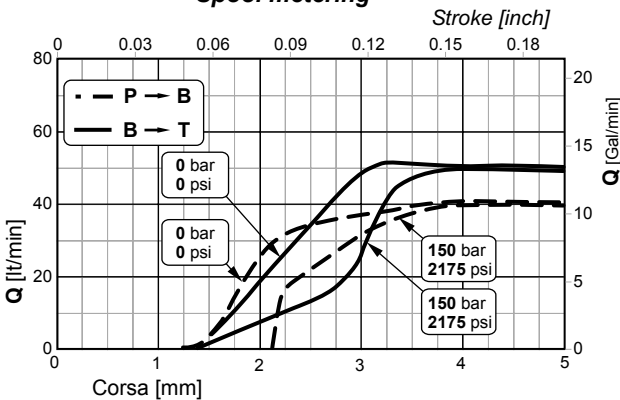


Perdite di carico tra due elementi in serie
Pressure drop through two sections connected in series

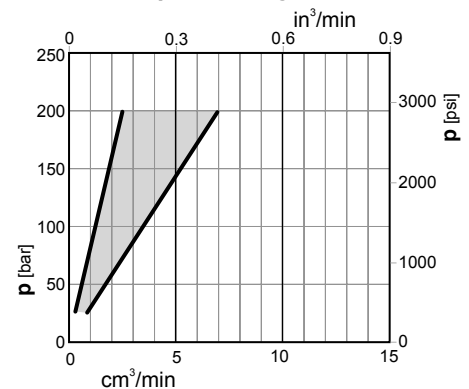


1 10 Sezioni / Sections

Curve di progressività Spool metering



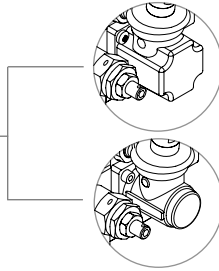
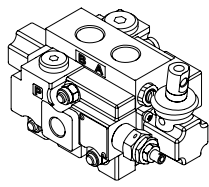
Trafilamenti sul cursore Spool leakage



N.B. Le curve sono ricavate con cursore 103 / NOTE. Performance curves measured using spool 103 type.

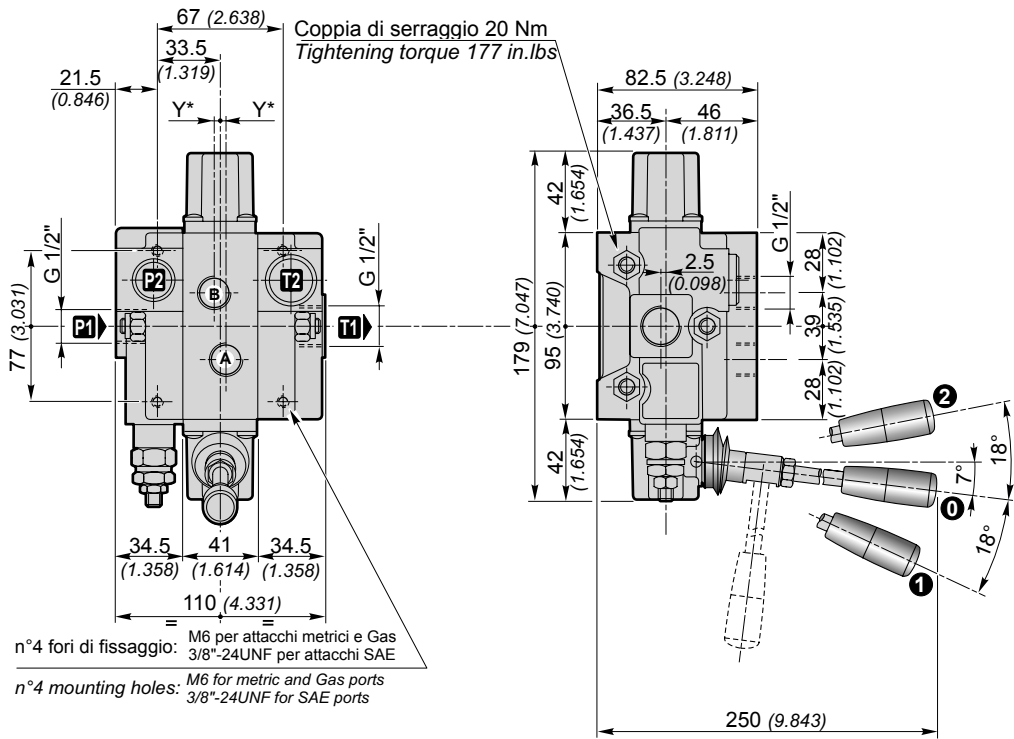
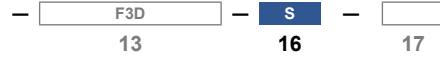
Q50

**DISTRIBUTORI COMPONIBILI
SECTIONAL DIRECTIONAL CONTROL VALVES**



(Standard)
Comando e posizionatore in plastica
Control and positioner plastic

S
Comando e posizionatore in Alluminio
Control and positioner Aluminium



Ad esaurimento / Phasing-out



Filettature disponibili / Available ports

Bocche Ports	BSP (standard)	SAE
P1	G 1/2"	3/4" - 16UNF (SAE 8)
P2	G 1/2"	3/4" - 16UNF (SAE 8)
A-B	G 1/2"	3/4" - 16UNF (SAE 8)
T1	G 1/2"	7/8" - 14UNF (SAE 10)
T2	G 1/2"	3/4" - 16UNF (SAE 8)
Y* [mm]	2.5	1.5

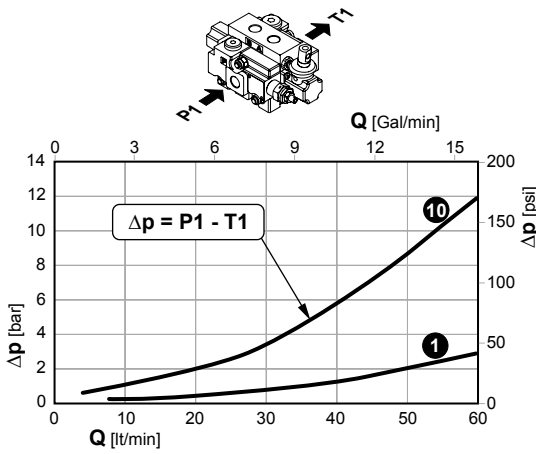
Tappo per carry-over (su uscita T1)
Carry-over plug (on T1 port)

T1	G 1/2"
X	G 3/8" - G 1/2"
T1	7/8"-14UNF (SAE 10)
X	3/4" - 16UNF (SAE 8) 7/8"-14UNF (SAE 10)

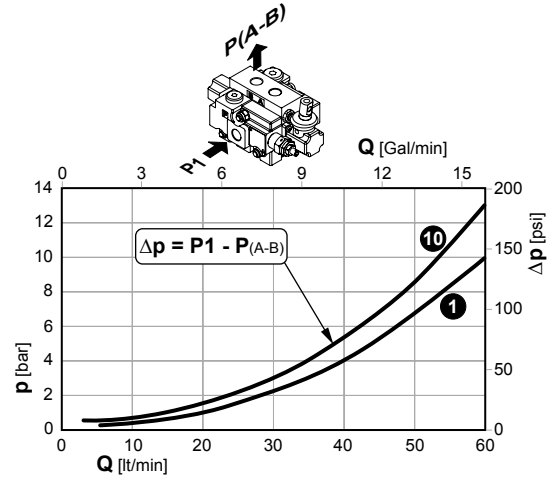
Q50

**DISTRIBUTORI COMPONIBILI
SECTIONAL DIRECTIONAL CONTROL VALVES**

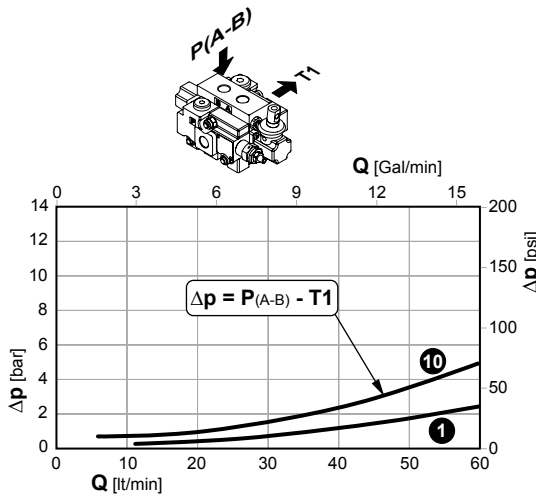
Perdite di carico con il cursore in posizione neutra
(Δp in funzione del numero di sezioni attraversate)
Pressure drop with spool in neutral position
(Δp depending on the number of the crossed sections)



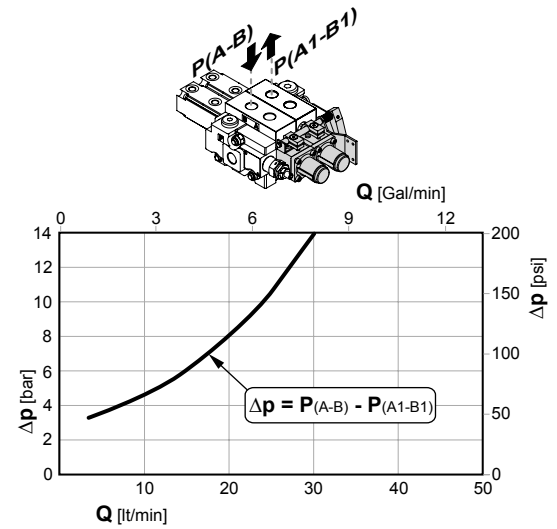
Perdite di carico con il cursore in posizione di lavoro
(Δp in funzione del numero di sezioni attraversate)
Pressure drop with spool in working position
(Δp depending on the number of the crossed sections)



Perdite di carico con il cursore in posizione di lavoro
(Δp in funzione del numero di sezioni attraversate)
Pressure drop with spool in working position
(Δp depending on the number of the crossed sections)

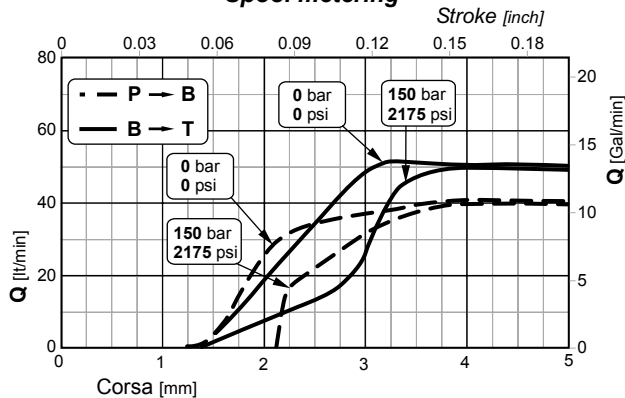


Perdite di carico tra due elementi in serie
Pressure drop through two sections connected in series

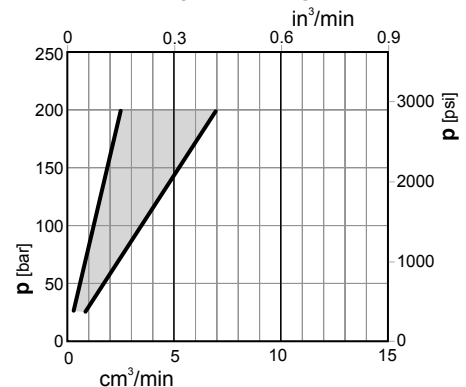


1 10 Sezioni / Sections

**Curve di progressività
Spool metering**



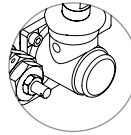
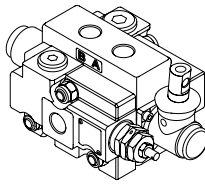
**Trafilamenti sul cursore
Spool leakage**



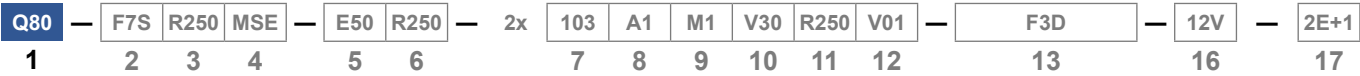
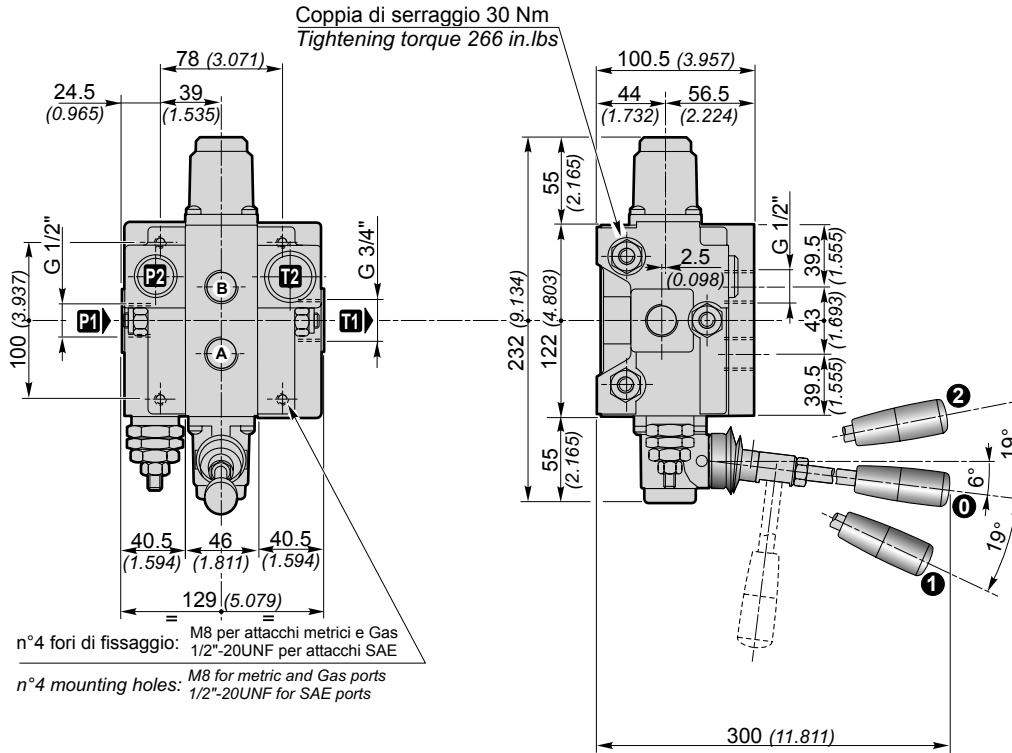
N.B. Le curve sono ricavate con cursore 103 / NOTE. Performance curves measured using spool 103 type.

Q80

**DISTRIBUTORI COMPONIBILI
SECTIONAL DIRECTIONAL CONTROL VALVES**



(Standard)
Comando e posizionatore in Alluminio
Control and positioner Aluminium



Filettature disponibili / Available ports

Bocche Ports	BSP (standard)	BSP G 3/4"	SAE
P1	G 1/2"	G 3/4"	7/8" - 14UNF (SAE 10)
P2	G 1/2"	G 3/4"	7/8" - 14UNF (SAE 10)
A-B	G 1/2"	G 3/4"	3/4" - 16UNF (SAE 8)
T1	G 3/4"	G 3/4"	1" 1/16" - 12UN (SAE 12)
T2	G 3/4"	G 3/4"	7/8" - 14UNF (SAE 10)

Tappo per carry-over (su uscita T1)
Carry-over plug (on T1 port)

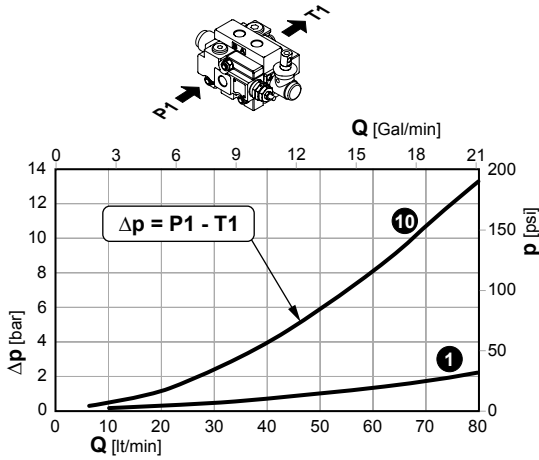
Port	Thread
T1	G 3/4"
X	G 1/2" - G 3/4"
T1	1" 1/16"-12UN (SAE 12)
X	7/8" - 14UNF (SAE 10)
T1	G 3/4"
X	G 3/4"

Dimensioni in / Dimensions in: mm (inch)

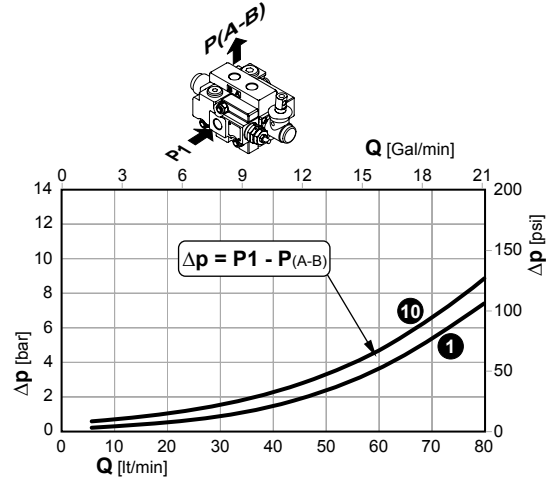
Q80

DISTRIBUTORI COMPONIBILI SECTIONAL DIRECTIONAL CONTROL VALVES

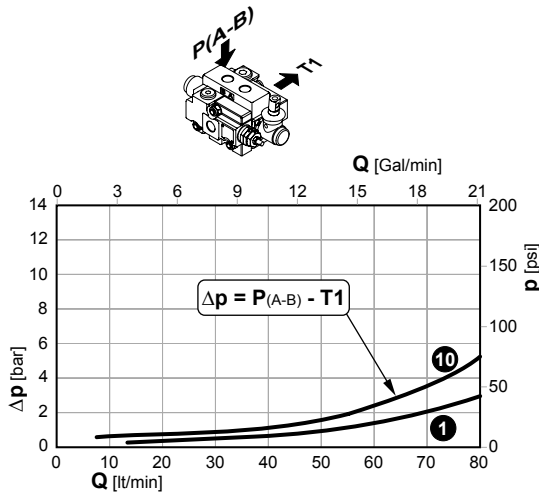
Perdite di carico con il cursore in posizione neutra
(Δp in funzione del numero di sezioni attraversate)
Pressure drop with spool in neutral position
(Δp depending on the number of the crossed sections)



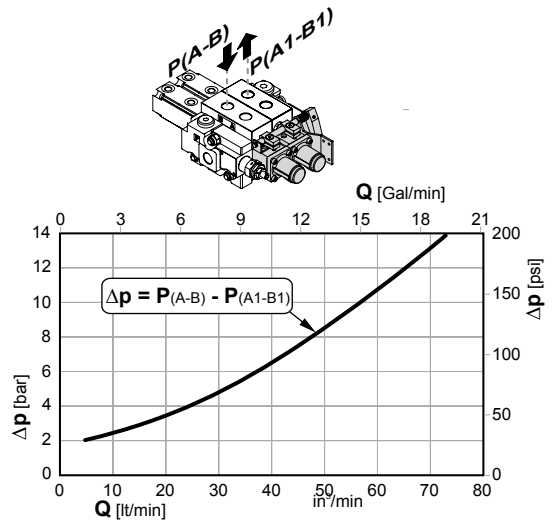
Perdite di carico con il cursore in posizione di lavoro
(Δp in funzione del numero di sezioni attraversate)
Pressure drop with spool in working position
(Δp depending on the number of the crossed sections)



Perdite di carico con il cursore in posizione di lavoro
(Δp in funzione del numero di sezioni attraversate)
Pressure drop with spool in working position
(Δp depending on the number of the crossed sections)

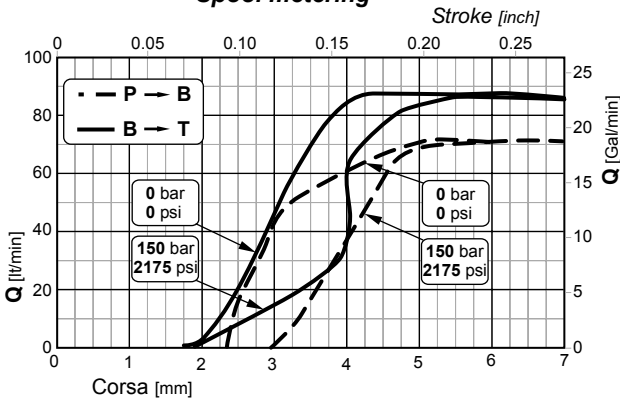


Perdite di carico tra due elementi in serie
Pressure drop through two sections connected in series

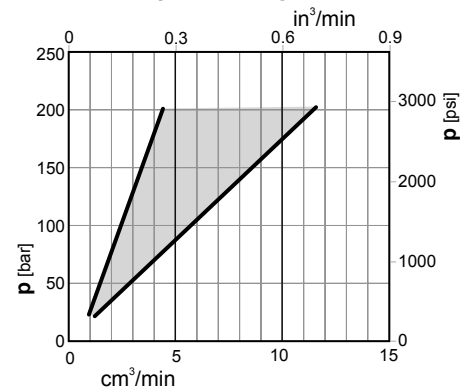


1 10 Sezioni / Sections

Curve di progressività Spool metering



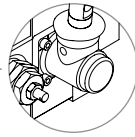
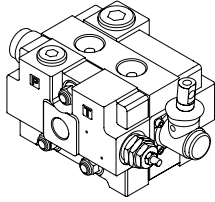
Trafilamenti sul cursore Spool leakage



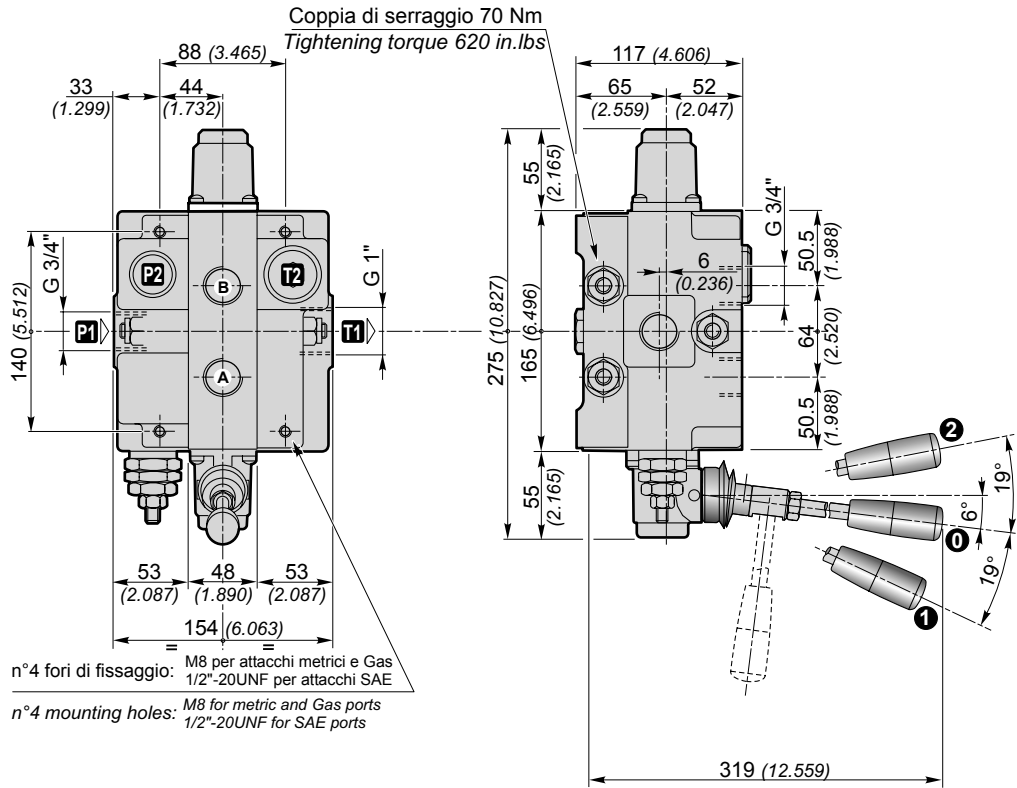
N.B. Le curve sono ricavate con cursore 103 / NOTE. Performance curves measured using spool 103 type.

Q130

**DISTRIBUTORI COMPONIBILI
SECTIONAL DIRECTIONAL CONTROL VALVES**



(Standard)
Comando e posizionatore in Alluminio
Control and positioner Aluminium



Q130 — F7S R250 MSE — E50 R250 — 2x 103 A1 M1 V30 R250 V01 — F3D — 12V — 2E+1

1 2 3 4 5 6 7 8 9 10 11 12 13 16 17

Filettature disponibili / Available ports

Bocche Ports	BSP (standard)	BSP G 1"	SAE
P1	G 3/4"	G 1"	1" 5/16 - 12UN (SAE 16)
P2	G 3/4"	G 1"	1" 5/16 - 12UN (SAE 16)
A-B	G 3/4"	G 1"	1" 5/16 - 12UN (SAE 16)
T1	G 1"	G 1"	1" 5/16 - 12UN (SAE 16)
T2	G 1"	G 1"	1" 5/16 - 12UN (SAE 16)

Tappo per carry-over (su uscita T1)
Carry-over plug (on T1 port)

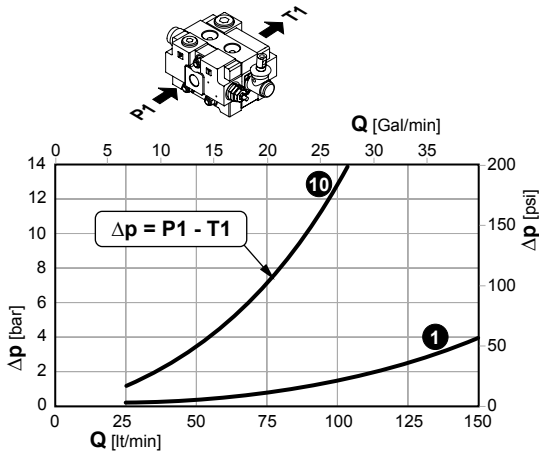
Port	Thread
T1	G 1"
X	G 3/4" - G 1"
T1	G 1"
X	G 1"
T1	1" 5/16-12 UN (SAE 16)
X	1" 1/16-12 UN (SAE 12)

Dimensioni in / Dimensions in: mm (inch)

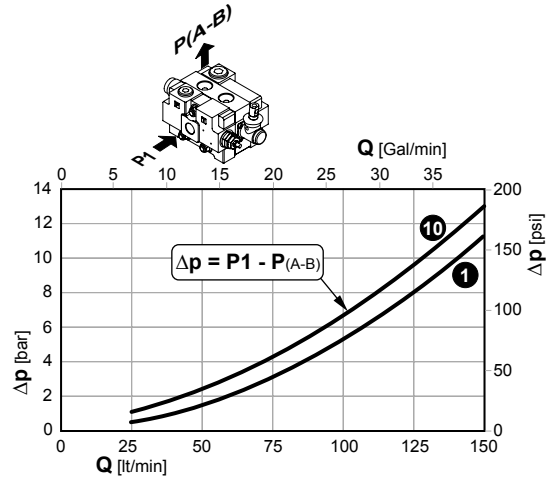
Q130

DISTRIBUTORI COMPONIBILI SECTIONAL DIRECTIONAL CONTROL VALVES

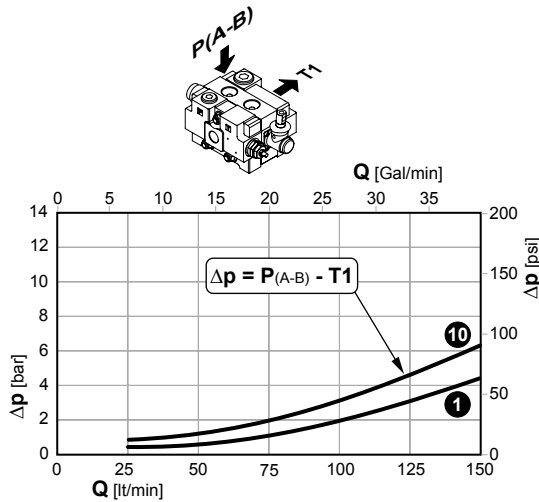
Perdite di carico con il cursore in posizione neutra
(Δp in funzione del numero di sezioni attraversate)
Pressure drop with spool in neutral position
(Δp depending on the number of the crossed sections)



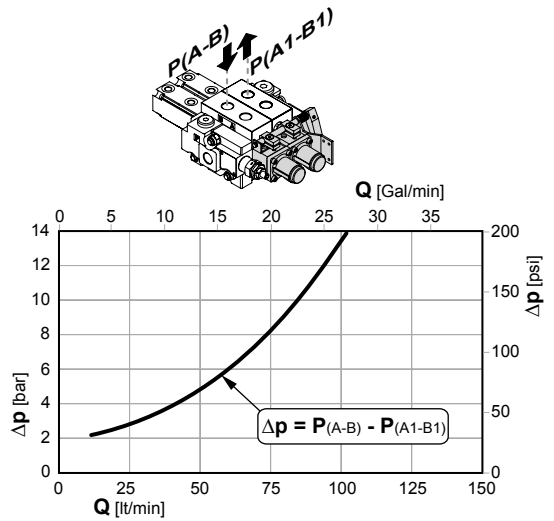
Perdite di carico con il cursore in posizione di lavoro
(Δp in funzione del numero di sezioni attraversate)
Pressure drop with spool in working position
(Δp depending on the number of the crossed sections)



Perdite di carico con il cursore in posizione di lavoro
(Δp in funzione del numero di sezioni attraversate)
Pressure drop with spool in working position
(Δp depending on the number of the crossed sections)

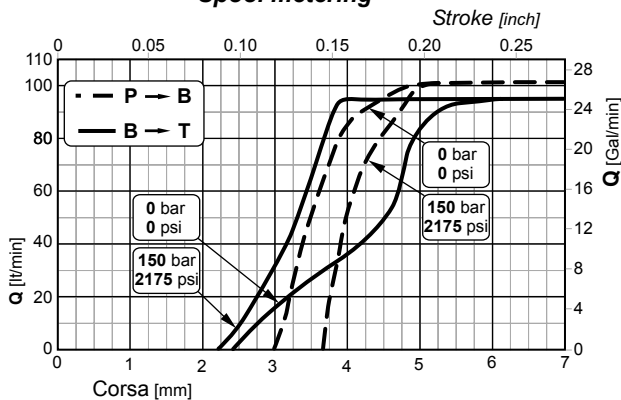


Perdite di carico tra due elementi in serie
Pressure drop through two sections connected in series

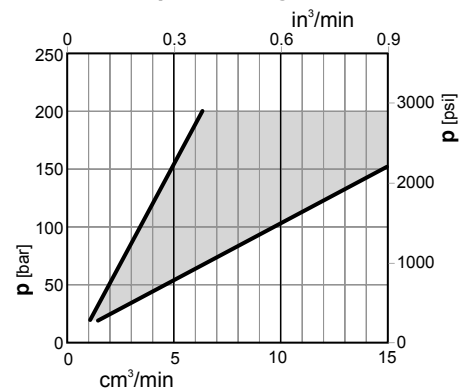


1 10 Sezioni / Sections

Curve di progressività Spool metering



Trafilamenti sul cursore Spool leakage



N.B. Le curve sono ricavate con cursore 103 / NOTE. Performance curves measured using spool 103 type.