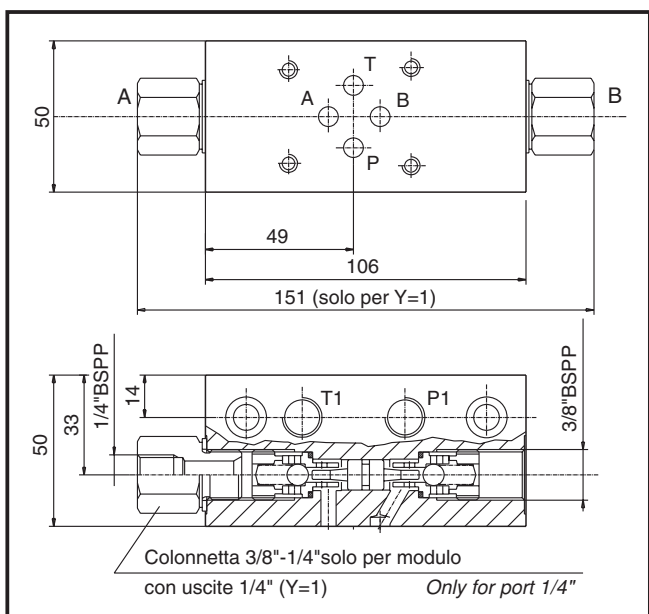


MODULO PER ELETTROVALVOLA CETOP 2143 (luce ø6) CON VALVOLE DI RITEGNO PILOTATE A SFERA
Modular block with P.O. check valves able to accept CETOP 3 (2143) configuration valves

N12 (coll. in parallelo / parallel circuit)	DENOMINAZIONE VALVOLA / Valve denomination	CODICE ORDINAZIONE / Ordering code	G3.860.11.X.Y.0
N13 (coll. in parallelo / parallel circuit)			G3.860.12.X.Y.0
N14 (coll. in parallelo / parallel circuit)			G3.860.13.X.Y.0
N34 (coll. in serie / series circuit)			G3.860.33.X.Y.0
N32 (coll. in serie / series circuit)			G3.860.31.X.Y.0
N47 (coll. in serie / series circuit)			G3.860.46.X.Y.0



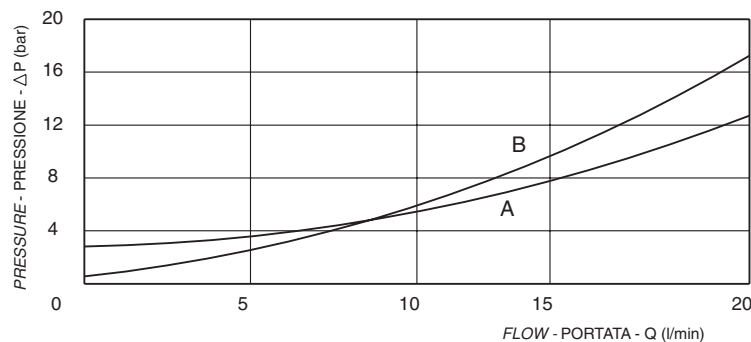
Modulo per elettrovalvola CETOP 2.1-4-3 con valvole unidirezionali a sbloccaggio oleodinamico.

- Filtraggio consigliato: 50 micron o inferiore
- Trafilamento: nullo
- Possibilità di montare OR sul pistone di pilotaggio

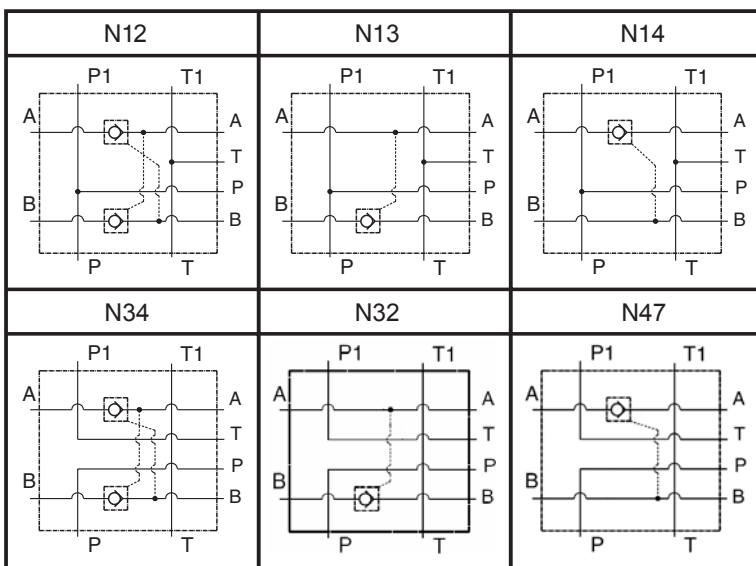
A selection of modular block with P.O. check valves able to accept block CETOP 3 (2143) electrovalves.

In order to replace the check valves you must use a special key available from OIL SYSTEM.

- Each block includes 4 OR 108 gaskets.
- Leakage free
- Suggested filtration: 50 micron nominal or better
- Possibility to have an OR gasket on the piloting piston



A = Caduta di pressione in portata libera / Loss of pressure with free flow
 B = Caduta di pressione in apertura pilotata / Loss of pressure with cracking piloting pressure



X	Guarnizione sul pistone di pilotaggio / O-ring on pilot piston	
A	Senza guarnizione / no O-ring	
B	Con guarnizione / with O-ring	
Y	Attacchi / Port Size	
	A-B	P1-T1
1	1/4" BSPP	1/4" BSPP
2	3/8" BSPP	1/4" BSPP
	Rapporto di pilotaggio / Pilot ratio	
	4 : 1	

pressione di lavoro max. / max working pressure

250 bar

portata max. / max flow

20 l/min