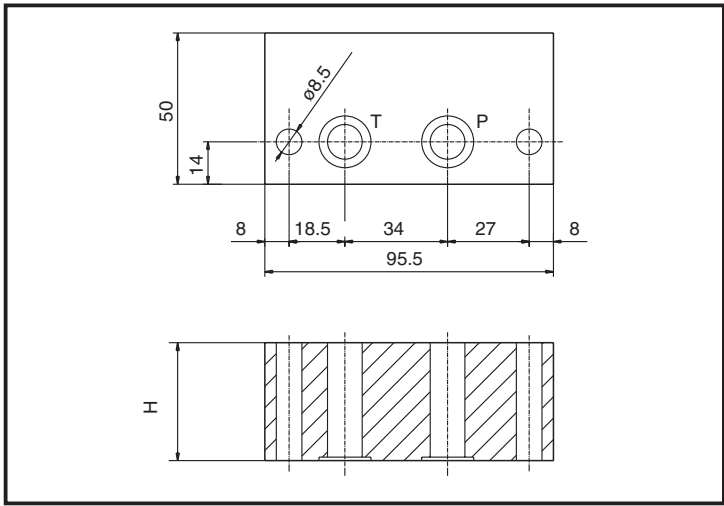


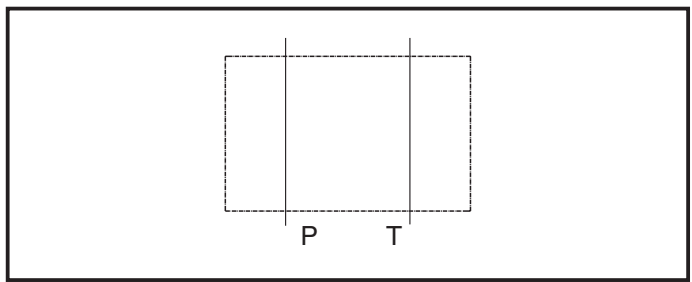
MODULO DISTANZIATORE
Space modular block

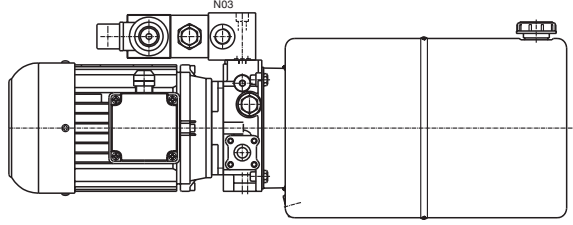
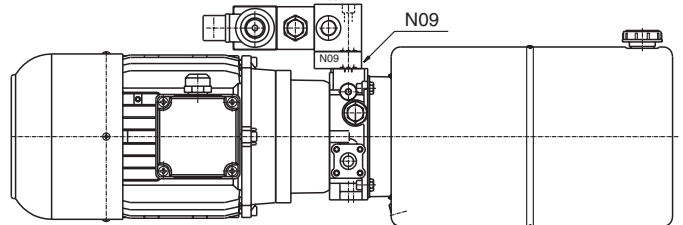
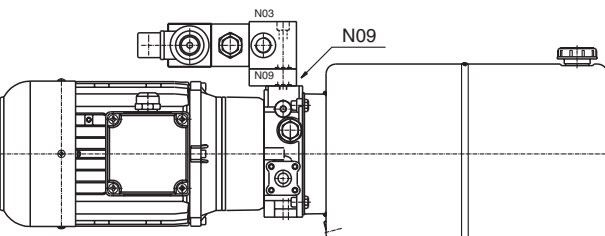
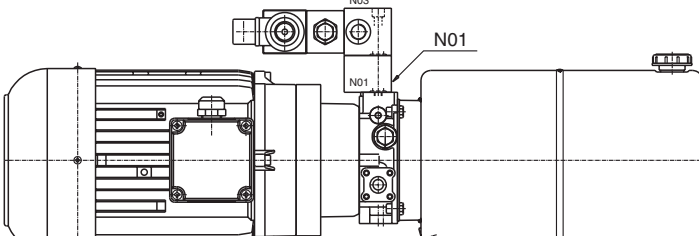
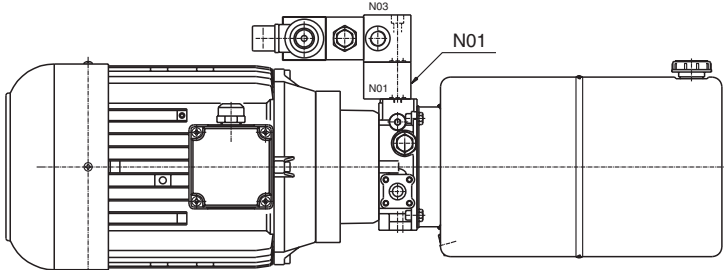
N09 (H = 18)	DENOMINAZIONE VALVOLA <i>Valve denomination</i>	CODICE ORDINAZIONE <i>Ordering code</i>	G3.860.10.000
N01 (H = 39)			G3.860.01.000
N02 (H = 69)			G3.860.38.000



Blocchi modulari utili per distanziare i blocchi sovrapposti da ingombri di flange, motori od altro che ne impediscano il montaggio.
- Ogni blocco viene fornito completo dei 2 OR 2056.

These modular blocks have been designed to have the ability to be assembled as a stack to allow clearance between flanges and motors of different sizes and types.
- Each block includes 2 OR 2056 gaskets.



<p>Motore Grandezza IEC71 Trascinamento F68 - Motor IEC71 frame Coupling "F68"</p> 	<p>Motore Grandezza IEC90 Trascinamento F16 - Motor IEC80 frame Coupling "F14"</p> 
<p>Motore Grandezza IEC80 Trascinamento F14 - Motor IEC90 frame Coupling "F16"</p> 	<p>Motore Grandezza IEC100 Trascinamento F18 - Motor IEC100 frame Coupling "F18"</p> 
<p>Motore Grandezza IEC112 Trascinamento F18 - Motor IEC112 frame Coupling "F18"</p> 	

pressione di lavoro max. <i>max working pressure</i>	portata max. <i>max flow</i>	
300 bar	40 l/min	